

## 이상와에 발생한 비기능성 이소성 부갑상선 1예

이환호<sup>1</sup> · 김성원<sup>1</sup> · 허 방<sup>2</sup>

## A Case of Nonfunctioning Ectopic Parathyroid Gland in the Pyriform Sinus

Hwan Ho Lee, MD<sup>1</sup>, Sung Won Kim, MD<sup>1</sup> and Bang Hur, MD<sup>2</sup><sup>1</sup>Department of Otolaryngology-Head and Neck Surgery and <sup>2</sup>Pathology,  
Kosin University College of Medicine, Busan, Korea

## -ABSTRACT-

Embryologically, ectopic parathyroid glands may be found anywhere from the angle of the jaw to the pericardium. Location of the ectopic gland in the pyriform sinus is rarely described. We report a case of an ectopic parathyroid gland as normal function in the pyriform sinus. It appeared as a tumorous lesion in the pyriform sinus and we removed it using an endoscopic approach. (J Clinical Otolaryngol 2005;16:302-305)

KEY WORDS : Ectopic parathyroid · Pyriform sinus.

## 서 론

1982 Joseph

5 가

가

3

(1-3)

, 4

가

가

가

1

## 증 례

2005 3 , 52

가 1

가

(Fig. 1).

: 2005 10 1

: 2005 10 30

: , 602 - 702

34

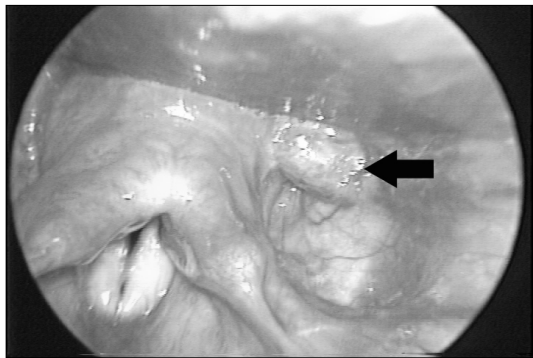
, CO<sub>2</sub>

: (051) 990 - 6470 · : (051) 245 - 8539

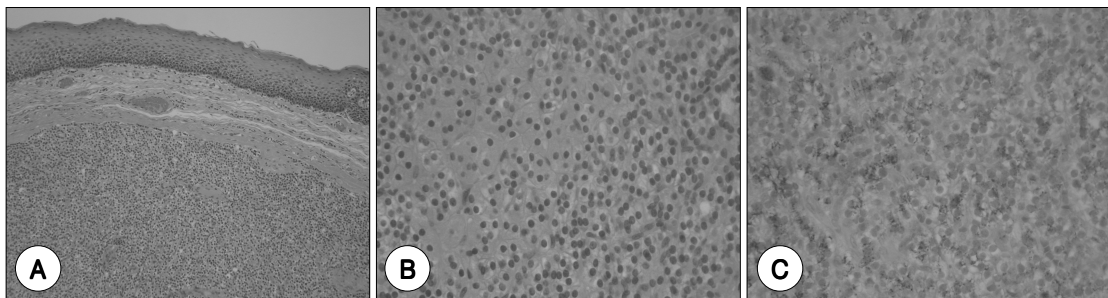
E - mail : swforyou@hanmail.net

1 × 1 cm  
 CO<sub>2</sub> (Sharplan Model C33, Tel Aviv, Israel, continuous superpulse 3 watts)

가  
 H - E  
 (chief cell)  
 (oxyphilic cell)  
 (neuroendocrine marker) chromogranin  
 (Fig. 2).



**Fig. 1.** Direct rigid laryngoscopy shows a mass with pedicle (arrow) from the posterolateral wall of the left pyriform sinus.



**Fig. 2.** Photomicrograph under hematoxylin-eosin stain of parathyroid gland hyperplasia in the pyriform sinus. A : Histologic specimen shows submucosal well-demarcated nodule composed of epithelial cell proliferation ( × 100). B : High power view shows admixture of clear cells and oxyphilic cell ( × 400). C : The immunohistochemical reaction for chromogranin is strongly positive ( × 400).

가  
 가  
 42%  
 39% , 2~4% Tchnetium 99m sestamibi <sup>123</sup>  
 가 , 가 80~90% (4-7)(11)(12)

4-9)

3 , 4  
 (adenoma), (hyperplasia)  
 가 , 가  
 (immunohistochemisty) , cytokeratin  
 (±), EMA(-), vimentin(-), actin(-), S-100(+)  
 가  
 (neuroendocrine marker)  
 NSE(-), synaptophysin(±), chromogranin(+)

4)<sup>6</sup>10)  
 7)9)

CO<sub>2</sub>  
 CO<sub>2</sub>

4-7)10)

가 가  
 가  
 가

가 <sup>4)</sup>

중심 단어 :

REFERENCES

- 1) Joseph MP, Nadol JB, Pilch BZ, Goodman ML. Ectopic parathyroid tissue in the hypopharyngeal mucosa (pyriform sinus). *Head Neck Surg* 1982;5:70-4.
- 2) Kim R, Fede A, Marchiori C. Ectopic parathyroid tissue in the pyriform sinus. *Acta Otorhinolaryngol Ital* 1987;7:631-5.
- 3) Tsuchiya K, Nakagawa C, Sakai T, Yamazaki T, Sawaki S. An ectopic parathyroid gland in the submucosa of the pyriform sinus. *Jibi Rinshoh*. 1989;35:637-41.
- 4) Fukumoto A, Nonaka M, Kamio T, Kamura E, Ozu C, Baba S, et al. A case of ectopic parathyroid gland hyperplasia in the pyriform sinus. *Arch Otolaryngol Head Neck*

- Surg* 2002;128:71-4.
- 5) Stojadinovic A, Shriver CD, Casler JD, Gaertner EM, York G, Jaques DP. *Endoscopic laser excision of ectopic pyriform sinus parathyroid adenoma. Arch Surg* 1998;133:101-3.
  - 6) Wang CA. *The anatomic basis of parathyroid surgery. Ann Surg* 1976;183:271-5.
  - 7) Sahin M, Er C, Unlu Y, Tekin S, Seker M. *An ectopic parathyroid gland in the left axillary region: Case report. Int Surg* 2004;89:6-9.
  - 8) Corvera CU, Jablons D, Morita E, Clark OH. *Retrocardiac parathyroid tumor: A rare mediastinal site. Surgery* 2004;135:104-7.
  - 9) Maxwell R, Carter WB, Smith RM, Perry RR. *Multiple ectopic parathyroid glands. Am Surg* 2000;66:1028-31.
  - 10) Ojha B, Liu HG, Mountz JM. *Large carotid sheath parathyroid adenoma localized by Tc-99m Sestamibi. Clin Nucl Med* 2001;26:27-8.
  - 11) Moinuddin M, Whynott C. *Ectopic parathyroid adenomas: Multi-imaging modalities and its management. Clin Nucl Med* 1996;21:27-32.
  - 12) Chaffanjon PC, Voirin D, Vasdev A, Chabre O, Kenyon NM, Bricchon PY. *Selective venous sampling in recurrent and persistent hyperparathyroidism: Indication, technique, and results. World J Surg* 2004;28:958-61.