

외이도에 발생한 진피내 모반 2예

류재영 · 문준환 · 이등호 · 방정환

Two Cases of Intradermal Nevus in External Auditory Canal

Jae Young Ryu, MD, Jun Hwan Moon, MD, Deung Ho Lee, MD and Jung Hwan Bang, MD

Department of Otolaryngology, National Medical Center, Seoul, Korea

-ABSTRACT-

While intradermal nevi are common benign pigmented skin tumor, occurrence within the external auditory canal is uncommon. We experienced two cases of intradermal nevus which originated in posterior wall of external auditory canal. They were treated by en block excision with split thickness skin graft. The clinical and pathologic features of the intradermal nevus arising within the external auditory canal are presented, and the literatures were reviewed. (J Clinical Otolaryngol 2005;16:289-292)

KEY WORDS : Intradermal nevus · External auditory canal.

서론
(melanocytic nevus)
(junctional nevus), (compound nevus), (intradermal nevus)
가
Kim¹⁾
Kim²⁾
Kim³⁾
증례
증례 1 :
57
10
1 x 1 cm
(Fig. 1A).
: 2005 9 1
: 2005 10 12
: , 100 - 196 6가 18 - 79
: (02) 2260 - 7244 · : (02) 2276 - 0534
E - mail : ryuent@yahoo.co.kr

(Fig. 4A).
 (Fig. 2A),
 0.6×0.6 cm 가
 (Fig. 2B).
 black , (Fig. 3A).
 silk 6-0 5 , 2 / 60/35
 가 dB
 (Fig. 1B). 6 0.5×0.5 cm

증례 2 :

65 3
 20

(Fig. 4B).

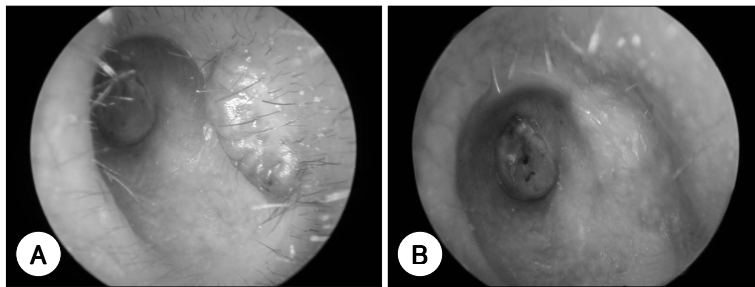


Fig. 1. A : The endoscopic view shows the light brown colored dome-shaped papillomatous nodule on posterior wall of left cartilaginous external auditory canal. B : The endoscopic view shows well grafted skin at 2 weeks postoperatively.

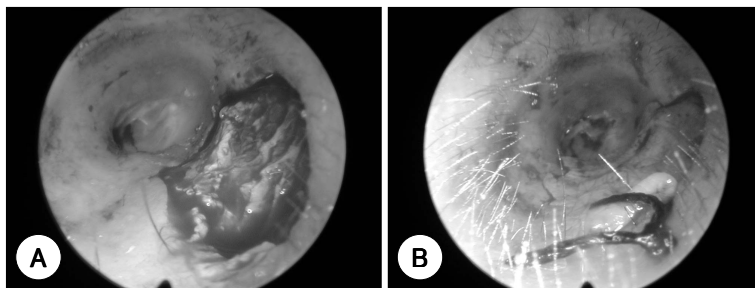


Fig. 2. Split thickness skin graft for reconstruction of skin defect on posterior wall of left external auditory canal. A : Skin defect after excision of intradermal nevus. B : Immediate postoperative view.

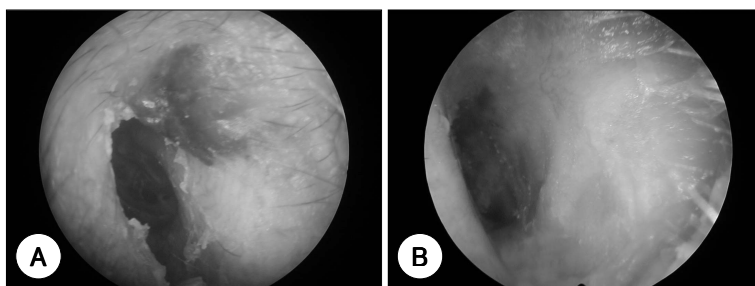
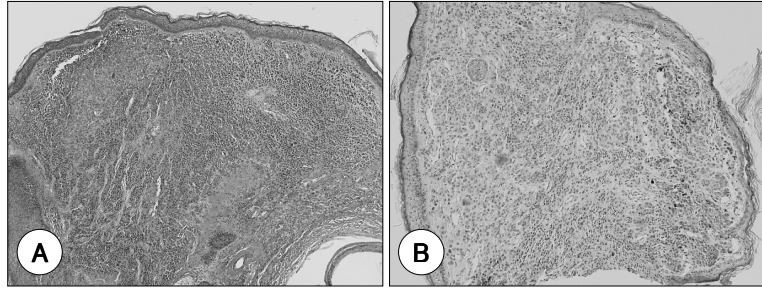


Fig. 3. A : Endoscopic view shows the erythematous to black colored dome-shaped nodule on postero-superior wall of left external auditory canal. B : The picture shows well patent external auditory canal without recurrence 12 months after operation.

Fig. 4. There are numerous cell nests and cords of nevus cell in the whole dermis without junctional activities. Also there are scattered melanin pigment in the upper dermis. A : case 1, B : case 2 (H & E, × 100).



(pedunculated lesion) 7)

7 2 가 , ,
6 가 , (sessile)
, 12 (papule) (nodule)
(Fig. 3B).

고 찰

8)
가 9) 가
20~ 가 10)
25 가 (junctional activity)가 Nishijima 2 가 44 가,
가 4) , 11)
가 , , , ,
, 가 (transcanal approach), (end-
Steigmaier 가 oaural approach), (retroauricular
approach) 가 가 1 가
, 2
5)6)
Lever (flat lesion),
(slightly elevated lesion often
with raised center), (papillomatous le-
sion), (dome - shaped lesion), Kim 2)

가 Kim 3) 가
가

가

중심 단어 :

REFERENCES

1) Lee JC, Chyung EJ, Park SR. *Clinical and histopathological observation on acquired melanocytic nevus. Korean J Dermatol 1988;26:874-8.*
 2) Kim SM, Cho JJ, Huh HB, Hur CH. *A case of compound nevus of the external auditory canal. Korean J Otolaryngol 1998;41:792-4.*
 3) Kim YK, Park BA, Cho YS, Yoon YJ. *Two cases of in-*

tradermal nevus of the external auditory canal. Korean J Otolaryngol 1998;41:1478-80.
 4) Maize JC, Foster G. *Age-related change in melanocytic nevi. Clin Exp Dermatol 1979;4:49-58.*
 5) Stegmaier OC. *Natural regression of the melanocytic nevus. J Invest Dermatol 1959;32:413-21.*
 6) Stegmaier OC. *Life cycle of the nevus. Modern medicine 1963;31:79-91.*
 7) Lever WF, Schamburg-Lever G. *Histopathology of the skin. 8th ed. Philadelphia: JB Lippincott:1990. p.756-62.*
 8) Shaffer B. *Pigmented nevi: A clinical appraisal in the light of present-day histopathologic concepts. Arch Derm 1955;72:120-32.*
 9) Youngs R, Hawke M, Kwork P. *Intradermal nevus of the ear canal. J Otolaryngol 1988;17:241-3.*
 10) Benmeir P, Baruchin A, Weinberg A, Nahlieli O, Neuman A, Wexler MR. *Rare sites of melanoma: Melanoma of the external canal. J Craniomaxillofac-Surg 1995;23:50-3.*
 11) Nishijima W, Taloda S, Tsuchiya S, Naka H, Edamatsu H, Noguchi A. *Clinico-pathological study of nevocellular nevi in the external auditory canal. Nippon Jibiinkoka Gakkai Kaiho 1982;85:1039-46.*