

이소성 갑상선에서 기인한 결절성 과증식증 1예

심형준 · 문석진 · 박수찬 · 여창기

A Case of Nodular Hyperplasia Arising from Ectopic Thyroid

Hyung Jun Shim, MD, Seok Jin Moon, MD, Soo Chan Park, MD and Chang Ki Yeo, MD

Department of Otolaryngology-Head and Neck Surgery, Daegu Fatima Hospital, Daegu, Korea

-ABSTRACT-

Ectopic thyroid is an uncommon embryological aberration characterized by the presence of thyroid tissue in a site other than its usual pretracheal region. Nodular hyperplasia arising from ectopic thyroid is extremely rare. The authors report a recent case of nodular hyperplasia arising from ectopic thyroid in the anterior neck of a 27-year-old man. Thyroid scan should be employed when making a diagnosis and therapeutic plan of this disease. (J Clinical Otolaryngol 2005;16:281-283)

KEY WORDS : Ectopic thyroid · Nodular hyperplasia.

서 론

2003 5

1869 Hickman

300

가

1)

cm

가

1.5

가

2)3)

가

(Fig. 1)

. 99mTc - pertechnetate

증 례

가

(Fig. 2).

27

6

T3 163

: 2005 9 3

ng/dl, T4 4.8 µg/dl,

(TSH) 0.9 µIU/

: 2005 10 3

ml

: , 701 - 600

4

576 - 31

: (053) 940 - 7350 · : (053) 957 - 7417

(Fig. 3)

E - mail : ckyeo@fatima.or.kr



Fig. 1. Preoperative axial CT scan. The arrow indicate a mass lesion on anterior tracheal area.

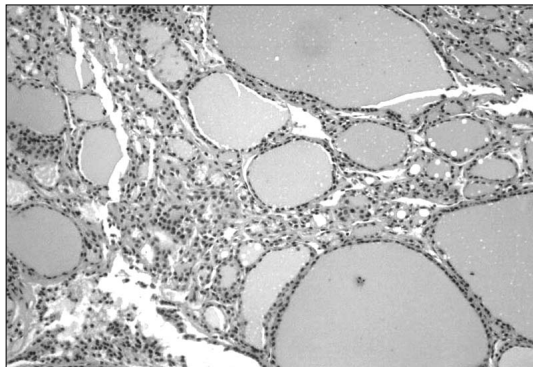


Fig. 2. Thyroid scanning (^{99m}Tc) shows uptake in the thyroid gland, but there is no uptake in mass.



Fig. 3. Microscopic finding of the mass (nodular hyperplasia : variable sized dilated follicles containing colloid material, oval shaped follicle cell with fine chromatin, H & E stain $\times 100$).

고 찰

100,000~300,000 1
 가 4000~
 8000 1 4
 4)
 가
 5)
 가 가 90%

4)6)
 가
 가 7)
 가 가
 가 8-10)
 가 가 11)
 가 가 12)
 가
 가 13)
 가 가

중심 단어 :

REFERENCES

- 1) Hickman W. *Congenital tumour of the base of tongue, pressing down the epiglottis on the larynx and causing death by suffocation sixteen hours after birth. Trans Pathol Soc Lond 1869;20:160-1.*
- 2) Hazarika P, Siddiqui SA, Pujary K, Shah P, Nayak DR, Badrishnan R. *Dual ectopic thyroid: A report of two cases. J Laryngol Otol 1998;112:393-5.*
- 3) Morgan NJ, Emberton P, Barton RP. *The importance of thyroid scanning in neck lumps a case report of ectopic tissue in the right submandibular region. J Laryngol Otol 1995;109:674-6.*
- 4) Leung AK, Wong AL, Robson WL. *Ectopic thyroid gland simulating a thyroglossal duct cyst. Can J Surg 1995;38:87-9.*
- 5) Kumar R, Khullar S, Gupta R, Marwah A. *Dual thyroid ectopy: Case report and review of literature. Clin nuclear medicine 2000;25:253-4.*
- 6) Strickland AL, Macfie JA, Van Wyk JJ, French FS. *Ectopic thyroid gland simulating thyroglossal duct cysts. JAMA 1969;208:307-10.*
- 7) Pinczower E, Crockett DM, Atkinson JB, Kun S. *Preoperative thyroid scanning in presumed thyroglossal duct cysts. Arch Otolaryngol Head Neck Surg 1992;118:985-9.*
- 8) Kim DY, Park BG, Lee TH. *A case of papillary thyroid carcinoma arising in a thyroglossal duct cyst with complete ectopic thyroid gland. Korean J Otolaryngol 2003;46:702-5.*
- 9) Livolsi VA, Rerzin KH, Savetsky L. *Carcinoma arising in median ectopic thyroid (including thyroglossal duct tissue). Cancer 1974;34:1303-15.*
- 10) Nussbaum M, Buchwald RP, Ribner A, Mori K, Litwins J. *Anaplastic carcinoma arising from median ectopic thyroid. Cancer 1981;48:2724-8.*
- 11) Misaki T, Koh T, Shimbo S, Kasagi K, Konishi J. *Dual-site thyroid ectopy in a mother and son. Thyroid 1992;4:325-7.*
- 12) Choi JH, Kim DH, Kang HJ, Lee DJ, Lee HM. *Dual ectopic thyroid. Korean J Otolaryngol 2001;44:897-900.*
- 13) Wong RJ, Cunningham MJ, Curtin HD. *Cervical ectopic thyroid. Am J Otolaryngol 1998;19:397-400.*