

경부림프절 전이암의 역형성 변화를 동반한 갑상선 유두상 암종 1 치험예

부산대학교 의과대학 이비인후과학교실,¹ 병리과학교실²

이병주¹ · 왕수건¹ · 이정훈¹ · 김지연²

A Case of Papillary Thyroid Carcinoma with Anaplastic Transformation of Cervical Lymph Node Metastasis

Soo-Geun Wang, MD,¹ Byung-Joo Lee, MD,¹ Jung-Hoon Lee, MD¹ and Jee-Yeon Kim, MD²

¹Department of Otolaryngology and ²Pathology, College of Medicine,
Pusan National University, Busan, Korea

—ABSTRACT—

A case of thyroid carcinoma with an area of anaplastic transformation in the cervical lymph node metastasis is reported. A 66-year-old female presented anterior neck mass for 1 month and undertaken total thyroidectomy and central neck dissection for the paratracheal lymph node metastasis. In the histopathologic findings, tumor of the left thyroid gland showed papillary carcinoma and the paratracheal lymph node showed undifferentiated carcinoma which was thought as anaplastic transformation of papillary carcinoma. There is no evidence of recurrence after 24 months. (J Clinical Otolaryngol 2004;15:146-149)

KEY WORDS : Thyroid cancer · Anaplastic carcinoma · Lymph node · Metastasis.

서 론

갑상선 유두상 암종은 5~10%의 경우, (trans-
forming dedifferentiation) 가
가 , 가 , 가
가 가 가 , 가
가 가 가 , 가
4~5
2 가

: 2004 4 3

: 2004 5 13

: , 602 - 739

1가

증 례

: (051) 240 - 7331 · : (02) 246 - 8668

E - mail : wangsg@pusan.ac.kr

66

가 1



Fig. 1. Axial CT scan shows heterogenous mass (3×3 cm) on left thyroid lobe and enlargement of left paratracheal lymph node.

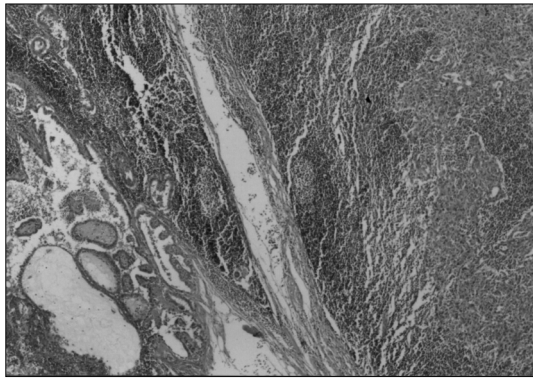


Fig. 2. Histopathology of tumor in the left thyroid gland shows papillary carcinoma (H-E stain, ×400).

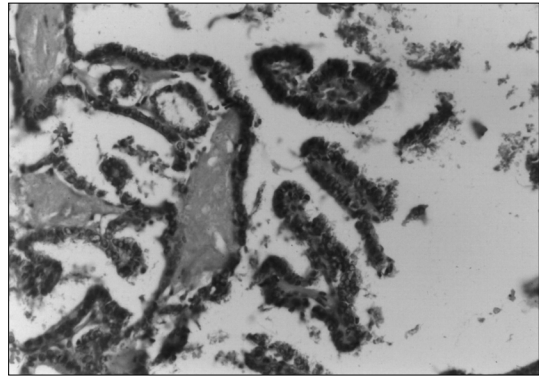


Fig. 3. Left paratracheal lymph node (H-E stain, ×40). Right side of photograph shows papillary carcinoma and left side of that shows undifferentiated carcinoma (anaplastic transformation).

2001 8 20

2.0 × 1.5 cm

(Fig. 2),

(undifferentiated carcinoma)

(Fig. 3).

(I¹³¹ 100 mCi)

24

2001 7 10

5

가

3 × 3 cm

고 찰

가

2%

(T₃, FT₄, TSH), thyroglobulin, calcitonin

3)

가

3 × 3 cm

가

가

(Fig. 1).

2

4)5) , 17) 가 가 5 cm , 가 가 가 6) , 7) 가 가 가 8) 100% , 8) 14) 가 14) 가 15) 가 7) Haigh 26 8 4 2 가 16) 가 5 cm

중심 단어 :

REFERENCES

- 1) Tenvall J, Lundell G, Wahlberg P, Bergenfelz A, Grimelius L, Akerman M, et al. Anaplastic thyroid carcinoma: three protocols combining doxorubicin, hyperfractionated radiotherapy and surgery. *Br J Cancer* 2002;86:1848-53.
- 2) Saunderson CA, Nayar R. Anaplastic spindle-cell squamous carcinoma arising in association with tall-cell papillary cancer of thyroid: A potential pitfall. *Diagn Cytopathol* 1999;21(6):413-8.
- 3) Aldinger KA. Anaplastic carcinoma of the thyroid. A review of 84 cases of spindle and giant cell carcinoma of the thyroid. *Cancer* 1978;41:2267-75.
- 4) Ishibashi T, Kasai N, Sakamoto A. A case of anaplastic transformation of thyroid carcinoma in cervical lymph node metastasis. *Gan No Rinsho* 1985;31:318-22.
- 5) Kawahara E, Ooi A, Oda Y. Papillary carcinoma of the thyroid gland with anaplastic transformation in the metastatic foci: An immunohistochemical study. *Acta Pathol Jpn* 1986;36:921-7.
- 6) Vnette D, MacDonald L, Yazdi H. Papillary carcinoma of the thyroid with anaplastic transformation: Diagnostic pitfalls in fine needle aspiration. *Diagn Cytopathol* 1991;7:75-8.
- 7) Cannizzaro Ma, De Maria A, Fazzi C, Mazzong G, Terminella A, Fiorenza G, et al. Anaplastic carcinoma of the thyroid. *Minerva Chir* 1993;48(21-22):1293-9.
- 8) Saunders CA, Nayar R. Anaplastic spindle cell squamous carcinoma arising in association with tall-cell papillary cancer of the thyroid. *Diagn Cytopathol* 1999;21:413-8.

- 9) Agarwal S, Rao RS, Parikh DM, Parikh HK. *Histologic trends in thyroid cancer 1969-1993: a clinico-pathologic analysis of the reactive proportion of anaplastic carcinoma of the thyroid. J Surg Oncol 1996;63:251-5.*
- 10) Carcangiu ML, Steeper T, Zampi G, Rosai J. *Anaplastic thyroid carcinoma: a study of 70 cases. Am J Clin Pathol 1985;83:135-58.*
- 11) Shingu K, Kobayashi S, Yokoyama S, Fujimori M, Asanuma K, Ito KI, et al. *The likely transformation of papillary thyroid carcinoma into anaplastic carcinoma during postoperative radioactive iodine-131 therapy: Report of a case. Surg Today 2000;30:910-3.*
- 12) Harada T, Ito K, Shimaoka K, Hosoda Y, Yakumaru K. *Fatal thyroid carcinoma. Cancer 1977;39:2588-96.*
- 13) Ozaki O, Ito K, Mimura T, Sugino K. *Anaplastic transformation of papillary thyroid carcinoma in recurrent disease in regional lymph node: A histologic and immunohistochemical study. J Surg Oncol 1999;70:45-8.*
- 14) Levendag PC, De porre PM, van putton WL. *Anaplastic carcinoma of the thyroid gland treated by radiation therapy. Int J Radiat Oncol Biol Phys 1993;26(1):125-8.*
- 15) Sugino K, Ito K, Mimura T, Nagahama M, Fukunari N, Kubo A, et al. *The important role of operation in the management of anaplastic thyroid carcinoma. Surgery 2002;131(3):245-8.*
- 16) Haigh PI, Ituarte PH, Wu HS, Treseler PA, Posner MD, Quivey JM, et al. *Completely resected anaplastic thyroid carcinoma combined with adjuvant chemotherapy and irradiation is associated with prolonged survival. Cancer 2001;91(12):2335-42.*
- 17) Nel CJ, Van heerden JA, Goellner JR, Gharib H, McConahey WM, Taylor WF, et al. *Anaplastic carcinoma of the thyroid: a clinicopathologic study of 82 cases. Mayo Clin Proc 1985;60(1):51-8.*
- 18) Sugitani I, Kasai N, Fujimoto Y, Yanagisawa A. *Prognostic factors and therapeutic strategy for anaplastic carcinoma of the thyroid. World J Surg 2001;25(5):617-22.*