

반전성 유두종을 동반한 상악동의 기질화 혈종 1예

가톨릭대학교 의과대학 이비인후과학교실
윤희로 · 방충일 · 오충현 · 강준명A Case of Organized Hematoma of the
Maxillary Sinus Combined with Inverted Papilloma

Hee Ro Yoon, MD, Choong Ill Bang, MD, Chung Hyeon Oh, MD and Jun Myung Kang, MD

Department of Otolaryngology-Head and Neck Surgery, College of Medicine,
The Catholic University of Korea, Seoul, Korea

-ABSTRACT-

Organized hematoma is histologically benign lesion. But Organizing procedure of hematoma increase pressure of hematoma, and lead to erosion of adjacent tissues. Organized hematoma of the maxillary sinus is especially very rare. Organized hematoma should be included in the differential diagnosis when patients have history of frequent epistaxis, nasal stuffiness and expansile lesion in the unilateral maxillary sinus. We report a case of organized hematoma of the maxillary sinus that extended to contralateral nasal cavity through septum and combined with inverted papilloma. (J Clinical Otolaryngol 2004;15:130-133)

KEY WORDS : Hematoma · Maxillary sinus · Inverted papilloma.

서론

혈종은 조직학적 특성에 따라 급성, 만성, 그리고 조직화 혈종으로 분류된다. 조직화 혈종은 조직학적으로 선천성 선암성 병변이다. 그러나 조직화 혈종의 발생은 혈종의 압력 증가로 인하여 인접 조직을 침식할 수 있다. 상악동 조직화 혈종은 특히 드물다. 상악동 조직화 혈종은 환자가 빈번한 코피, 코막힘, 그리고 일측성 상악동 팽창성 병변을 보일 때 감별 진단에 포함시켜야 한다. 본 보고는 상악동 조직화 혈종이 비강을 통해 반대편 비강강막을 침범하여 역전성 유두종과 동반된 경우를 보고한다. (J Clinical Otolaryngol 2004;15:130-133)

증례

환자 : 2004 3 24
 : 2004 5 21
 : 420 - 717 2 35 가 2000 11
 : (032) 340 - 2264 · : (032) 340 - 2674
 E - mail : entkjm@hfh.cuk.ac.kr

(Fig. 1).
well - Luc

2003 6



Fig. 1. Initial axial CT scan shows inhomogenous large soft tissue lesion occupying left nasal cavity and maxillary antrum. There are focal bony destructions of medial and posterolateral bony wall of left maxillary antrum, turbinate (2000. 11.).

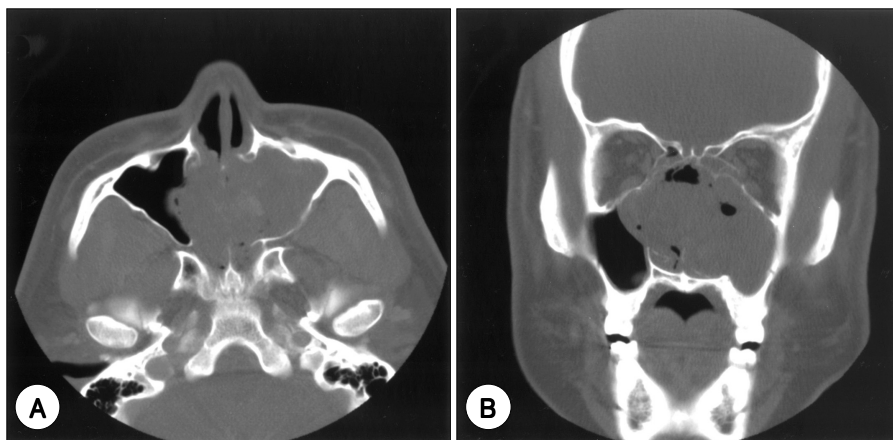


Fig. 2. Preoperative axial (A) and coronal (B) CT scan shows that a large soft-tissue mass arising from left nasal cavity extends into the left maxillary sinus, right nasal cavity, nasal septum, lateral wall of the right nasal fossa and inferomedial wall of the bilateral bony orbits (2003. 6.).

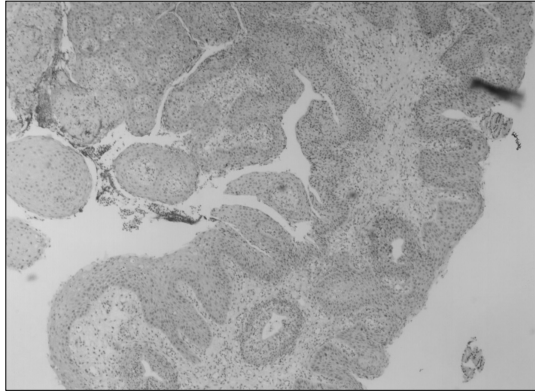


Fig. 3. Microscopic view of the inverted papilloma in right nasal cavity (H & E, x 40).

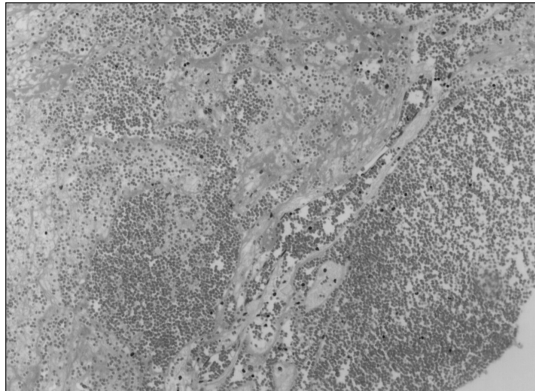


Fig. 4. Microscopic view of organized hematoma shows blood clot containing degenerated blood cells, angiogenesis, and fibrosis (H & E, x 100).

(Fig. 4),

8

고 찰

가

2)

가

(ameloblastoma),
(esthesioneuroblastoma)

가

가

1-3) Caldwell - Luc
가 가

Caldwell - Luc , Denker

1-3)

3)

8)

1-3)

중심 단어 :

가 ,
가 ,
(amorphous fibrin mass)
5)

가
가 ,
가 ,
가
가

REFERENCES

- 1) Ozhan S, Arac M, Isik S, Oznur II, Atilla S, Kemaloglu Y. Pseudotumor of the maxillary sinus in a patient with von Willebrand's disease. *Am J Roentgenol* 1996;166(14):950-1.
- 2) Unlu HH, Mutlu C, Ayhan S, Tarhan S. Organized hematoma of the maxillary sinus mimicking tumor. *Auris Nasus Larynx* 2001;28(3):253-5.
- 3) Lee BJ, Lee YS, Heo SC, Kim JH, Kim YJ. Organizing Hematoma of the Maxillary Sinus. *Korean J Otolaryngol* 2002;45(3):245-8.
- 4) Hwang SC, Doh JW, Bae HG, Lee KS, Yun IG, Byun BJ. Chronic Encapsulated Intracerebellar Hematoma Simulating Brain Tumor during Infancy. *J Korean Neurosurg* 1997;26(12):1714-7.
- 5) Lee YY, Moser R, Bruner JM, Tassel PV. Organized intracerebral hematoma with acute hemorrhage: CT patterns and pathologic correlations. *Am J Roentgenol* 1986;147(1):111-8.
- 6) Ito M, Tajima A, Sato K, Ishii S. Calcified cerebellopontine angle hematoma mimicking recurrent acoustic neuroma. *Clin Neurol Neurosurg* 1988;90(1):65-70.
- 7) Helidonis E, Myers EN. Organized hematoma of the neck stimulating carotid body tumor. *Int Surg* 1975;60(10):519-20.
- 8) Orlandi RR, Rubin A, Terrell JE, Anzai Y, Bugdaj M, Lanza DC. Sinus inflammation associated with contralateral inverted papilloma. *Am J Rhinol* 2002;16(2):91-5.