

구강암에서 하악 침습의 유형 및 평가 방법

연세대학교 의과대학 이비인후과학교실
 김 세 현

Patterns of Mandibular Invasion and Its Evaluation Methods in Oral Cavity Cancer

Se-Heon Kim, MD

Department of Otorhinolaryngology, Yonsei University College of Medicine, Seoul, Korea

서 론

조직학적 유형
 가
 2)3)
 가 ,
 가 ,
 가
 가
 (Fig. 1).
 가 U
 가
 가
 가
 가
 (Fig. 2). Wong 3)
 하악 침습의 유형
 가
 가

146 - 92
 : (02) 3497 - 3463 · : (02) 3463 - 4750
 E - mail : shkimmd@yumc.yonsei.ac.kr

가 . ,
 (alveolar bone)

신경주위 침습(Perineural invasion)
(inferior alveolar nerve)

가
4 가
4)
(alveolar ridge)
9)10)
8)11)

하악 침습 여부의 방사선학적 평가

Panoramic X - ray (orthopantomo -
graphy, OPG)
가 (body)
(ascending ramus)
가 (symphysis)
가
17)
13%

구강중양의 하악침습에 대한 평가

술전 및 술중 하악의 침습 여부에 대한 임상적 평가

0% 가 가 , panoramic
X - ray
가
12)13)15)19)
가
12% 30%가
12-14)
가
0~8%, 2~3%
가
15)16) Shaha 15)
가
가
3 CT(Denta scan)
가
20)21)
가
16) 16)19)22)
가

22)

분절절제술(Segmental resection)

1)

, 2)

, 3)

, 4)

, 5)

가

가

algorithm

(Fig. 4).

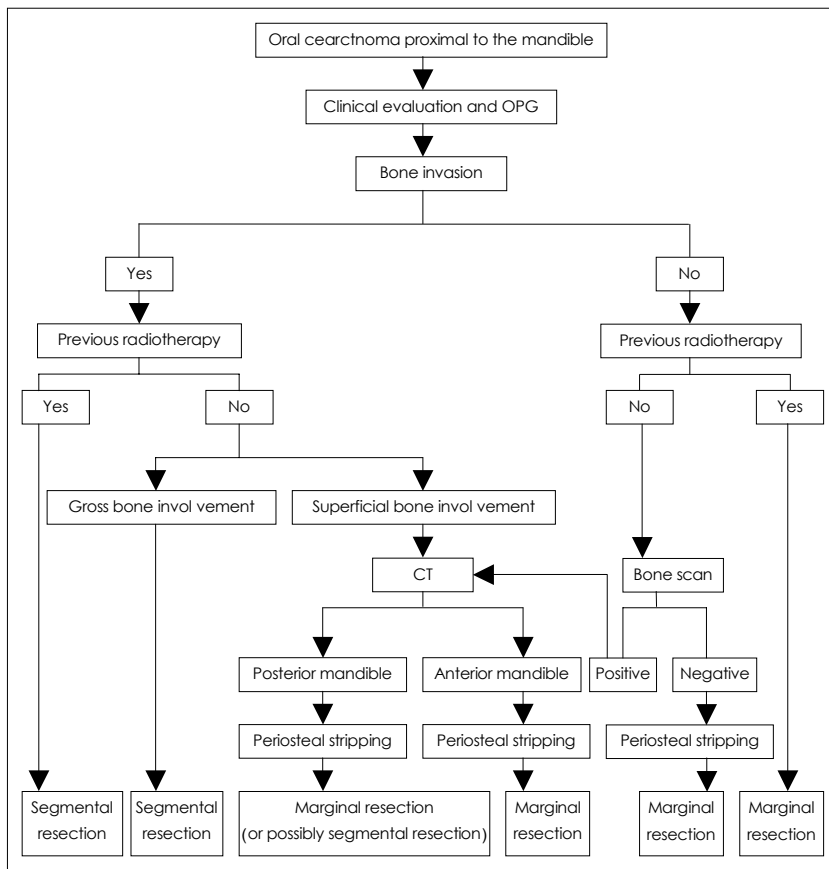


Fig. 4. An algorithm of mandibular preservation in oral cancer.

가
 :
 가
 'commando operation'
 . Marchetta
 ,
 .
 23)
 'in continuity composite
 resection'
 부분절제술

:
 가
 . Barttelbort
 1 cm
 가
 .
 25)
 가
 중심 단어 : . 가 .

REFERENCES

가
 . 1) 3
 , 2)
 , 3)
 ,
 , 'pipestem mandible'
 ,
 가
 (ascending ramus)가
 .
 24) 가
 1)
 가

- 1) Choi EC, Hong WP. *Partial mandibulectomy for oral cavity and oropharyngeal carcinoma. Korean J Head Neck Oncology 1994;10:163-70.*
- 2) Totsuka Y, Usui Y, Tei K. *Mandibular involvement by squamous cell carcinoma of the lower alveolus: analysis and comparative study of histologic and radiologic features. Head Neck 1991;13:40-50.*
- 3) Wong RJ, Keel SB, Glynn RJ, Varvares MA. *Histological pattern of mandibular invasion by oral squamous cell carcinoma. Laryngoscope 2000;110:65-72.*
- 4) McGregor AD, MacDonald DG. *Routes of entry of squamous cell carcinoma to the mandible. Head Neck Surg 1988; 10:294-301.*
- 5) Brown JS, Browne RM. *Factors influencing the patterns of invasion of the mandible by oral squamous cell carcinoma. Int J Oral Maxillofac Surg 1995;24:417-26.*
- 6) McGregor AD, MacDonald DG. *Reactive changes in the mandible in the presence of squamous cell carcinoma. Head Neck Surg 1988;10:378-86.*
- 7) Bhattathiri VN, Sudha L, Nair MK. *Periodontal space: major route to bone in oral cancer [letter]. Eur J Cancer 1991;27:222.*
- 8) Brown JS, Lowe D, Kalavrezos N, D'Souza J, Magennis P, Woolgar J. *Patterns of invasion and route of tumor entry into the mandible by oral squamous cell carcinoma. Head & Neck 2002;Apr:370-83.*
- 9) Ballantyne AJ, McCarten AB, Ibanez ML. *The extension of cancer of the head and neck through peripheral nerves. Am J Surg 1963;106:651-67.*
- 10) Carter RL, Foster CS, Dinsdale EA, Pittam MR. *Peri-neural spread by squamous carcinomas of the head and neck: a morphological study using anti-axonal and antimyelin monoclonal antibodies. J Clin Pathol 1983;36:269-75.*
- 11) Huntley TA, Busmanis I, Desmond P, Wiesenfeld D. *Mandibular invasion by squamous cell carcinoma: a computed tomographic and histological study. Br J Oral Maxillofac Surg 1996;34:69-74.*
- 12) Bahadur S. *Mandibular involvement in oral cancer. J Laryngol Otol 1990;104:968-71.*

- 13) Zupi A, Califano L, Maremonti P, Longo F, Ciccarelli R, Soricelli A. *Accuracy in the diagnosis of mandibular involvement by oral cancer. J Craniomaxillofac Surg* 1996; 24:281-4.
- 14) Jones AS, England J, Hamilton J. *Mandibular invasion in patients with oral and oropharyngeal squamous carcinoma. Clin Otolaryngol* 1997;22:239-45.
- 15) Shaha AR. *Preoperative evaluation of the mandible in patients with carcinoma of the floor of mouth. Head Neck* 1991;13:398-402.
- 16) Brown JS, Griffith JF, Phelps PD, Browne RM. *A comparison of different imaging modalities and direct inspection after periosteal stripping in predicting the invasion of the mandible by oral squamous cell carcinoma. Br J Oral M, Quinn A, Wilson G, Timon C. Mandibular invasion diagnosed by SPECT. Clin Otolaryngol* 1996;21:542-5.
- 17) Smyth DA, O'Dwyer TP, Keane CO, Stack J. *Predicting mandibular invasion in mouth cancer. Clin Otolaryngol* 1996;21:265-8.
- 18) Ahuja RB, Soutar DS, Moule B, Bessent RG, Gray H. *Comparative study of technetium-99m bone scan and orthopantomography in determining mandible invasion in intraoral squamous cell carcinoma. Head Neck* 1990;12: 237-43.
- 19) Tsue TT, McCulloch TM, Girod DA, Couper DJ, Weymuller Jr EA, Glenn MG. *Predictors of carcinomatous invasion of the mandible. Head Neck* 1994;16:116-26.
- 20) King JM, Caldarelli DD, Petasnick JP. *Dentascan TM: A new diagnostic method for evaluating mandibular and maxillary pathology. Laryngoscope* 1992;102:379-87.
- 21) Talmi YP, Bar-Ziv J, Yahalom R. *DentaCT for evaluating mandibular and maxillary invasion in cancer of the oral cavity. Ann Otol Rhinol Laryngol* 1996;105:431-7.
- 22) Chung TS, Yousem DM, Seigerman HM, Schlakman BN, Weinstein GS, Hayden RE. *MR of mandibular invasion in patients with oral and oropharyngeal malignant neoplasms. Am J Neuroradiol* 1994;15:1949-55.
- 23) Marchetta FC, Sako K, Murphy JB. *The periosteum of the mandible and intraoral carcinoma. Am J Surg* 1971;122: 711-3.
- 24) Dubner S, Heller KS. *Local control of squamous cell carcinoma following marginal and segmental mandibulectomy. Head Neck* 1993;15:29-32.
- 25) Barttelbort SW, Ariyan S. *Mandible preservation with oral cavity carcinoma: rim mandibulectomy versus sagittal mandibulectomy. Am J Surg* 1993;166:411-5.