

설 양측면에 발생한 다발성 침윤 지방종 1 예

최태욱 · 조형철 · 박상준 · 박호영

A Case of Multiple Infiltrating Lipoma of the Lateral Aspect of the Tongue

Tae Wook Choi, MD, Hyung Cheol Jo, MD, Sang Jun Park, MD and Ho Young Park, MD
Department of Otolaryngology-Head and Neck Surgery, Namkwang Hospital, College of Medicine,
Seonam University, Kwangju, Korea

- ABSTRACT -

Lipoma is a tumor composed of mature adipose tissue and represents the most common mesenchymal neoplasm. But, lipoma is an uncommon lesion in the oral cavity, especially of the tongue. It is classified into simple lipoma, fibrolipoma and infiltrating one. The diagnosis of lipoma of the oral cavity is depend on physical finding, radiologic examination and pathologic study of the surgical specimen. Surgical excision is the treatment of choice and recurrence is due to incomplete removal. We describe a case of an enormous multiple bilateral muscular infiltrating lipoma of lateral aspect of the tongue, with computed tomographic (CT) imaging, histopathologic diagnosis and review the current literatures. (**J Clinical Otolaryngol 2001;12:261-264**)

KEY WORDS : Lipoma · Infiltrating · Tongue · Excision.

가	서	론	66
	(mesenchymal tissue)		1
1-3)	가		
4 가	1)4-6)	증	례
,	66	가	1
가	가		
: 2001 8 10		6	
: 2001 8 20			
: , 502 - 157	120 - 1	4	
: (062) 370 - 7662		가	
: (062) 371 - 3092			
E - mail : provobis@lycos.co.kr			50



Fig. 1. Physical finding of bilateral multiple round masses along the lateral border of the tongue.

50

(Fig. 1)



Fig. 2. Preoperative axial CE (contrast enhanced) CT scan. Neck CT shows various sized well defined low attenuated masses with fine septation in the tongue. But the masses are infiltrated into the intrinsic muscles of the tongue (arrows).

(Fig. 2)

X-

가

(Fig. 3A)

(Fig. 3B).

15 g

0.1 x 0.1 cm

가 2.0 x 1.8 x 1.8 cm 0.1 x

(Fig. 4).

H - E

(Fig. 5).

5

6

고 찰

가

가

(simple lipoma), (fibrolipoma),
 (spindle cell lipoma), (pleo-
 morphic lipoma), (myxoid lipoma),

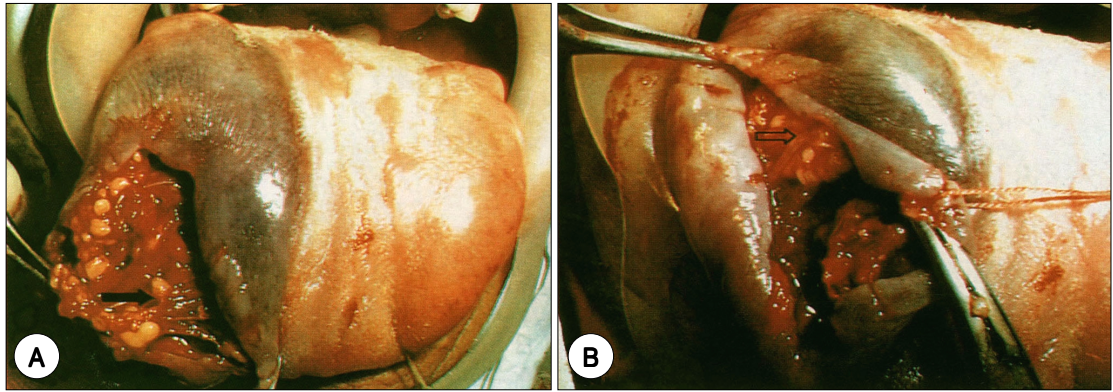


Fig. 3. Intraoperative views of lipoma of the tongue. A : The nodular fatty tissue is infiltrated into the intrinsic muscle of the tongue (arrow). B : Multiple fatty tumor lobules are observed around the lingual nerve (empty arrow).



Fig. 4. Removed tumor masses after operation.

(angioliipoma), (angiomyoli-
poma), (myelolipoma), (li-
poblastomatosis), (hibernoma),
(atypical lipoma) (infiltrating lipoma)

7)

4

1)4 - 6)

2

1)4)

(myxoid differentiation), (cell-
ular pleomorphism), 가,

10)

가
60

36.8

가 가
가 .11) 가

8)

가
가

4)

가

