

## 돌발성 난청을 보인 소뇌동맥 경색증 1례

이승환 · 정승원 · 박철원 · 박혜경 · 김기태

## A Case of Cerebellar Infarction Presenting Sudden Hearing Loss

Seung Hwan Lee, MD, Seung Won Jeong, MD, Chul Won Park, MD,  
Hye Kyung Park, MD and Ki Tae Kim, MD

Department of Otolaryngology, College of Medicine, Hanyang University, Seoul, Korea

## - ABSTRACT -

Sudden hearing loss is defined as an abrupt onset of sensorineural hearing disturbance which develops over a period of several hours or a few days without definite cause. Viral and vascular origin were suggested most causative problems developing sudden hearing loss. We report one case, complains sudden hearing disturbance with dizziness and then facial nerve weakness, tongue bite was developed subsequently. In brain MRI, anterior inferior cerebellar artery infarction was noted. After treatment of infarction, cerebellar function was improved but hearing loss was not recovered. We must remind the possibility that hearing loss was a leading symptom in cerebellar infarction. (*J Clinical Otolaryngol* 2001;12:80-82)

**KEY WORDS** : Sudden hearing loss · Cerebellar infarction.

서 론

가 가 .<sup>2)</sup>

가

1

. 1-4)

가

증 례

64

5

: 2001 1 22

: 2001 3 31

: , 471 - 020

249 - 1

1

: (031) 560 - 2360 · : (031) 566 - 4884

E - mail : shlee@hmc.hanyang.ac.kr

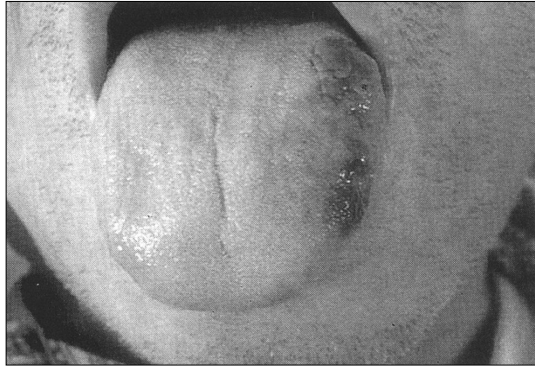


Fig. 1. Photograph of patient's bitten tongue due to decreased sensation of pain regardless of patient's will.

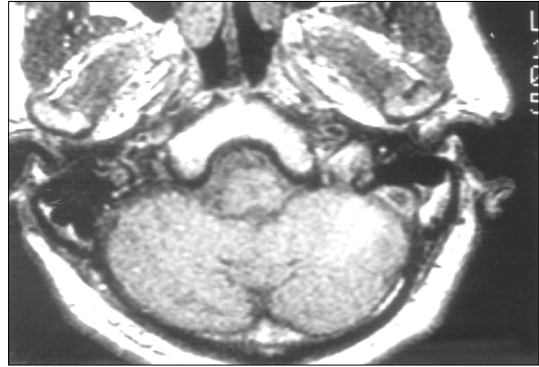


Fig. 2. T1 weighted axial image shows relatively round increased high signal intensity lesion in the left anterior inferior cerebellar artery (AICA) region.

. 가

(Weber test)

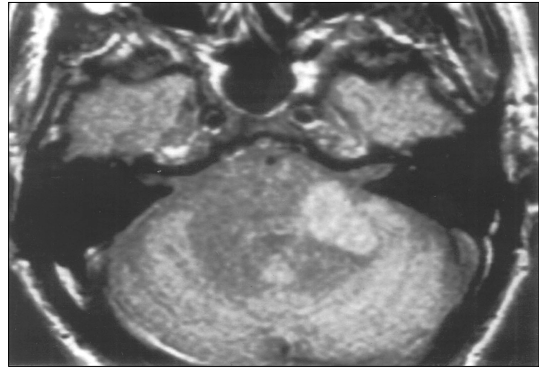


Fig. 3. T2 weighted image shows increased high signal intensity lesion in the left anterior inferior cerebellar artery territory compared with T1 weighted image.

가 352 mg/dl(60 110 mg/dl),

2

(Fig. 1). House -

31

Brackmann grade II

가

가

3

House - Br -

ackmann grade II

3

가 House -

Brackmann grade III

T1

7, 8

가

(Fig. 2). T2

고 찰

T1

(Fig. 3).

