

세침 흡입 검사시 상지로 방산통을 동반한 신경초종 2례

가
김승환 · 김찬우 · 전형규 · 전정기 · 차흥억Two Cases of Neurilemoma Accompanying Referred Pain to Upper
Extremity in Fine Needle AspirationSeung Hwan Kim, MD, Chan Woo Kim, Hyung Gyu Jeon, MD,
Geung Gi Jeung, MD and Heung Eog Cha, MDDepartment of Otorhinolaryngology-Head and Neck Surgery, Gachon Medical College,
Inchon, Korea

- ABSTRACT -

The neurilemoma is a benign tumor of Schwann cell origin arising from nerves covered with a neurilemmal sheath. It may precipitate symptoms by pressing the nerve fiber and rarely recur after surgical removal. We had experienced 2 cases of neurilemoma accompanying referred pain to upper extremity in fine needle aspiration. In one of our cases, we identified that the neurilemoma was originated from the brachial plexus. (**J Clinical Otolaryngol 2000;11:171-174**)

KEY WORDS : Neurilemoma · Referred pain · Brachial plexus.

서 론

가

2)

가

3)

: 2000 1 13

: 2000 4 10

: , 405 - 220

1198

가

: (032) 460 - 3324 · : (032) 467 - 9044

E - mail : asch@nownuri.net

4)

2

1)

1

증 례

가 증 례 1 :

44

2

2 × 2 cm

가 5
 T2WI 2×2 cm
 (Fig. 2).
 cm

1.5×1.5 cm
 가 (Fig. 1)

(Fig. 4).
 증례 2:
 22

(Fig. 3)
 가
 가

3×3 cm



Fig. 1. Axial neck CT scan shows 2×2 cm sized cystic and solid mass in left posterior cervical area.

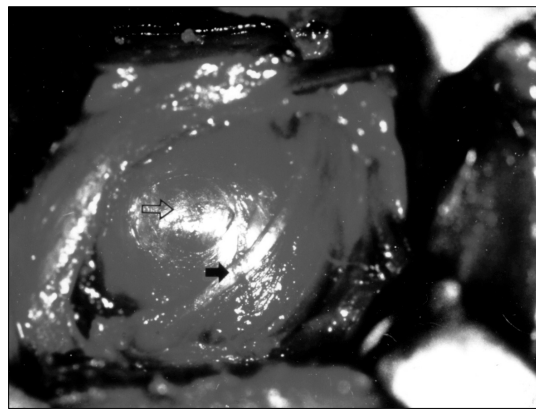


Fig. 3. Intraoperative photograph shows mass (white arrow) and it is originated from fifth cervical nerve (black arrow).



Fig. 2. MRI T2WI finding shows 2×2 cm sized ovoid shaped high signal intensity (black arrow) and tail of C5 root track (white arrow).

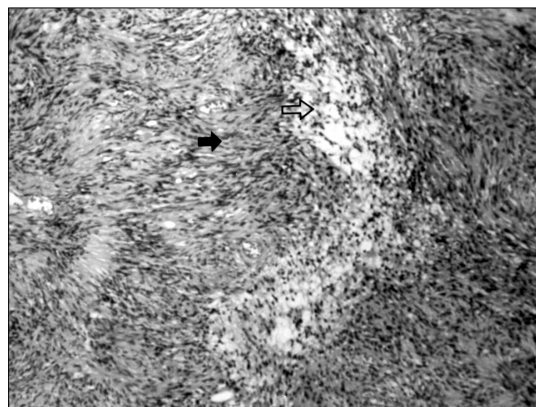


Fig. 4. Microscopically, the neurilemma is composed of palisading appearance of spindle cell nucleus (black arrow) & intercellular vacuole, reticular fiber (white arrow).

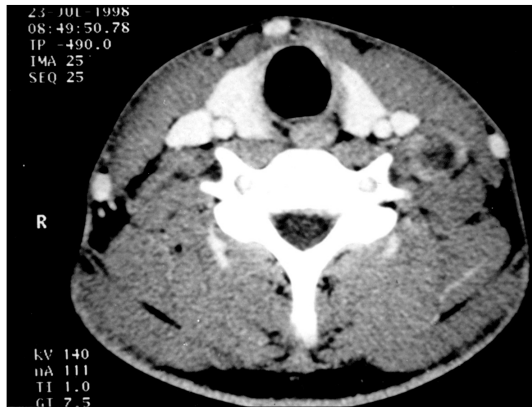


Fig. 5. Neck CT scan shows the rim enhanced ovoid shape mass in left posterior cervical area.

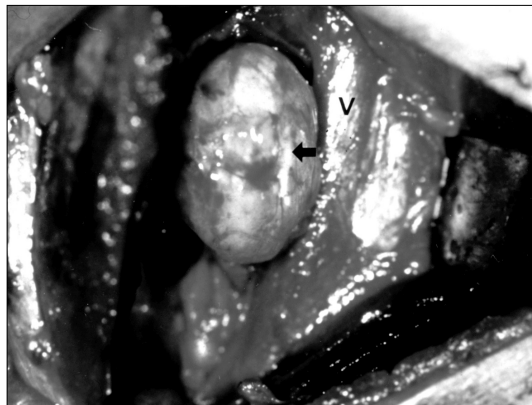


Fig. 6. Operative photographic shows yellowish round mass (black arrow) and internal jugular vein (v).

가 가 (Fig. 5)
 가 T2WI 2 x 2 cm 가 가
 가 가 가 가
 가 7 cm

(Fig. 6)

고 찰

1910 Verocay neurinoma

Schwanoma, perineural fibroblastoma, neurilemo-
 ma, encapsulated fibroma 가
 가

1-3) 가
 Ehrlich Martin 43%, Gore 37.6%,
 Cummings 25 30%, Staut 26%, Conley Da-
 ley 25% Kragh 55.6%
 가 , 2)4-8)

가 , 4)5)
 9, 10, 11, 12

7-9)
 Tronconi
 neurotic - Schwannian fibroblastic system
 Pineda 가 10) Mercantini
 Moppler
 Skinner sheath cell 11)

가 가
 12)
 13) 가 12)
 가
 가

가
 Antoni A , B
 Antoni A
 Antoni B
 가
 A B
 가
 가가 가
 14)

REFERENCES

- 1) Masson NP. *Experimenta and spontaneous schwannomas (peripheral gliomas)*. *Am J Pathol* 1932;8:367-71.
- 2) Conley JJ. *Neurogenous tumors in the neck*. *Arch Otolaryngol* 1955;61:167-80.
- 3) Mercantini ES, Mopper C. *Neurilemmoma of the tongue*. *Arch Otolaryngol* 1959;79:542-44.
- 4) Conley JJ, Janecka IP. *Neurilemmoma of the head & neck*. *Trans Acad Ophthalmol Otolaryngol* 1975;80:459-64.
- 5) Gore DO, Rankow R, Hanford JM. *Parapharyngeal neurilemmoma*. *Surg Gynecol Obstet* 1956;103:193-201.
- 6) Katz AD, Passy V, Kaplan Leo. *Neurogenous neoplasms of major nerves of the face & neck*. *Arch Surg* 1971;103:51-6.
- 7) Daley JH, Roesler HK. *Neurilemmoma of the cervical sympathetic chain*. *Arch Otolaryngology* 1963;77:262-7.
- 8) Kragh LV, Solule EH, Masson JK. *Benign and malignant neulemmomas of the head and neck*. *Surg Gynecol Obsteri* 1960;111:211-8.
- 9) Rensenfeld L, Graves H, Lawrence T. *Primary neurogenic tumors of the lateral neck*. *Ann Surg* 1968;167:847-55.
- 10) Pineda A. *Mast cells. Their presence and ultrastructural characteristics in peripheral nerve tumors*. *Arch Neurol* 1965;13:372-82.
- 11) Skinner HA. *The pathology of acoustic neuromas*. *Arch Otolaryngology* 1964;80:605-16.
- 12) Hong WP, Lee WS, Kim HW. *Clinical review of nueruil- emoma of head and neck*. *Korean J Otolaryngol* 1988;31:461-5.
- 13) Batsakis JG. *Tumors of the head and neck, 2nd edition; 1979, p.313-8.*
- 14) Henry MJ, Dewey JC, Robert DT. *Painful thoracic needle biopsy: A sign of neurogenic tumor*. *J Thoracic Imaging* 1993;8:230-2.

중심 단어 :