

경부에 발생한 모기질종 1례

가
이흥엽 · 전진하 · 유우정 · 정상희

A Case of Pilomatricoma in Neck

Heung-Youp Lee, MD, Jin-Ha Jeon, MD,
Woo-Jeong Yoo, MD and Sang-Hee Chung, MD

Department of Otolaryngology-Head and Neck Surgery, College of Medicine,
The Catholic University of Korea, Seoul, Korea

– ABSTRACT –

Pilomatricoma or calcifying epithelioma of Malherbe arises from hair cortex cell or hair follicle of sebaceous glands. Most frequently, the tumor presents as a solitary, indurated subcutaneous nodule on the face, neck or upper extremities during the first two decades of life. Recently we experienced a pilomatricoma in neck, which was diagnosed by histopathologic examination. The tumor was successfully removed by complete resection. So we report this case with a review of literature. (J Clinical Otolaryngol 2000;11:160-162)

KEY WORDS : Pilomatricoma · Neck.

서 론

1

(Pilomatricoma) 1880 Malherbe 증 례
Chenantais¹⁾ : 20 : 6 .
 : 2) : 1999 1 4 .
 0.5 3.0 cm , :
 가 : .
 : 5
 가 .
 : , , X-
 : 3)
 : 1999 8 25
 : 2000 5 15
 : , 137 - 040 505 1 x 2 cm 가 1/3
 가
 : (02) 590 - 1510 . : (02) 590 - 1354
 E - mail : entijh@cmc.cuk.ac.kr : 1999 3 10

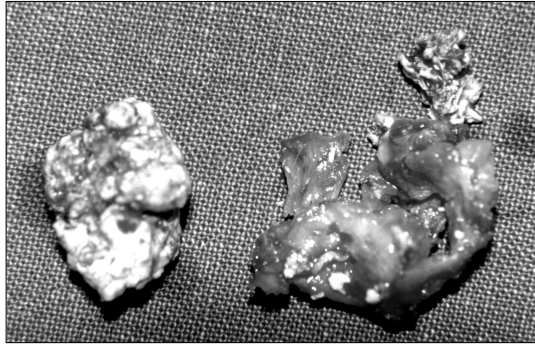


Fig. 1. Gross finding : 1 × 2 cm sized, well demarcated yellowish white mas with fibrous capsule.



Fig. 2. Histologic findings of pilomatricoma : epithelial nests composed of dark basaloid cells (thick arrow) and light ghost cells (thin arrow) surrounded by a foreign body giant cells (H & E, × 40).

가 4 cm (Fig. 1)

(basaloid cell)

(ghost cell)

(Fig. 2).

고 찰

1880 Malherbe Chenantias¹⁾가

(calcifying epithelioma)
 1942 Turhan Krainer⁴⁾가
 , 1949 Lever Griese-
 mer⁵⁾가 , 1961 Fo-
 rbis Helwig⁶⁾가 Pilomatricoma
 Pinkus⁷⁾ Pilomatricoma Pil-
 omatricoma

8)
 2%
 9) 가 Forbis He-
 lwig⁶⁾ 217 97%가
 3%
 10) 470 4 (0.85%)
 , 60 80%가 20
 ,¹¹⁾ 50 60
 ,¹²⁾
 (51%), (37.7%), (10.5%)
 11) 가 가
 가
 , Moelenbeck¹¹⁾ 3.5%

0.5 3 cm , 15 cm
¹³⁾
 가 가
 (basaloid cell)
 (ghost cell),
 가

¹⁴⁾

가
15) 1 2 cm

중심 단어 :

REFERENCES

- 1) Malherbe A. *Chenatais J. Note sur epithelioma calcifie des glandes sebacees. Prog Med 1880;8:826-37.*
- 2) Farrier S, Morgan M. *Bcl-2 expression in pilomatricoma. Am J Dermatopathol 1997;19:254-7.*
- 3) Neidermeyer HP, Peris K, Hofler H. *Pilomatrix carcinoma with multiple vesceal metastases. Cancer 1996;17:1311-4.*
- 4) Turhan B, Hranier L. *Bemerkungen ubber die sobenann-ten verkalkenden Epitheliome der Haut und ihrer Genese. Dermatologica 1942;85:73-90.*
- 5) Lever WF, Griesemer RD. *Calcifying epithelioma of Malherbe. Arch Dermatol 1949;59:516-8.*
- 6) Forbis R, Helwig EB. *Pilomatrixoma. Arch Dermatol 1961;83:606.*
- 7) Pinkus H, Mergregan AH. *A Guide to Dermatopathology. 2nd ed. New York, Appleton Century Crofts. Ins.;1976. p. 543-6.*
- 8) Lever WF, Schaumberg LG. *Histopathology of Skin, 4th ed. Philadelphia, JB. Lippincott;1975. p.587-9.*
- 9) Jones SM, Crumplin KH. *Calcifying epithelioma of Malherbe. Br J Surg 1972;59:387-8.*
- 10) Suhr KB, Lee WJ, Yoon JS, Lee JH, Park JK. *Clinical and hiatopathologic study of 25 cases with pilomatricomas. Kor J Dermatol 1994;32:83-93.*
- 11) Moehlenbeck FW. *Pilomatrixoma. Arch Dermatol 1973; 108:532-4.*
- 12) Kaddu S, Soyer HP, Cerroni L, et al. *Clinical and histop-athologic spectrum of pilomatricoma in adults. Int J Derm- atol 1994;33:705-8.*
- 13) McBrien M, Victor T, Wolff AP. *Pathologic diagosis pil-omatrixoma. Arch Otolaryngol Head Neck Surg 1988;114: 1042-5.*
- 14) Domanski HA, DOManski AM. *Cytology of pilomatrixo- ma in fine needle aspirates. Acta Cytol 1997;41:771-7.*
- 15) Mcculloch TA, Singh S, Cotton DWK. *Pilomatric carci- noma and multiple pilomatrixomas. Br J Dermatol 1996; 134:368-71.*