

골성형 피판을 이용한 치성골종 제거 1례

정동학 · 박정선 · 한창준 · 장태영

Removal of Dentogenous Osteoma Using Osteoplastic Flap

Dong-Hak Jung, MD, Jung-Sun Park, MD, Chang-Joon Han, MD and Tae-Young Jang, MD

Department of Otorhinolaryngology, Inha University College of Medicine, Sunghnam, Korea

- ABSTRACT -

Once, C-L operation was a fundamental treatment of chronic maxillary sinusitis. However nowadays, the effectiveness of the operation has decreased because of some problems such as facial asymmetry, numbness, and tenderness. Functional endoscopic sinus surgery has substituted the procedure, but still the C-L operation is useful for some diseases. The problems were caused by the removal of mucosa and the bony wall of the sinus. To prevent such complications, the authors gave C-L operation to a patient through the osteoplastic technique. The procedure has been performed on dentogenous osteoma patient. Anterior bony wall of maxillary sinus was incised using the drill, oscillating saw, and osteotome. Then, pathologic lesions in the sinus were completely removed which increased visual field and preserved the sinus mucosa. Finally, the window on the sinus was closed with the bone lid from the original site. The surgical field was good enough to complete removal of the diseases and preserve the sinus mucosa. There were no complications and recurrence. We suggest that the osteoplastic technique is needed in certain diseases which C-L operation would provide to give better visual fields and less opportunity of complications. (**J Clinical Otolaryngol 1999;10:273-276**)

KEY WORDS : Caldwell-Luc operation · Osteoplastic flap.

서 론

1893 1897 Caldwell Luc

¹⁾ Calwell - Luc

가

²⁾

: 1999 6 19

: 1999 12 2

: , 461 - 190

3309 - 327

: (0342) 720 - 5849 · : (0342) 720 - 5239

E - mail : rhinojd@netsgo.com

가

증례

환자 : 43세, 남자
 주소 : 1996년 4월 3일
 수술 :
 경과 :
 진단 :
 치료 : 6

3x2 cm 가
 (Fig. 1).
 1% 1:100,000
 2 CC
 10
 2
 가 가



Fig. 1. Postoperative CT scan. The axial CT scan shows an example of a patient who had a dentogenous osteoma in the left maxillary sinus.

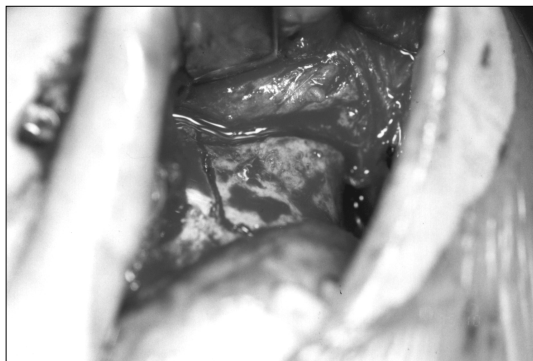


Fig. 2. Intraoperative finding. After drilling and sawing, osteotome was used for incising the anterior bony wall of the sinus.

Caldwell -
 Luc
 2 mm
 3.5 x 3 cm
 (Fig. 2).

(Fig. 3)

(Fig. 4).

: 2

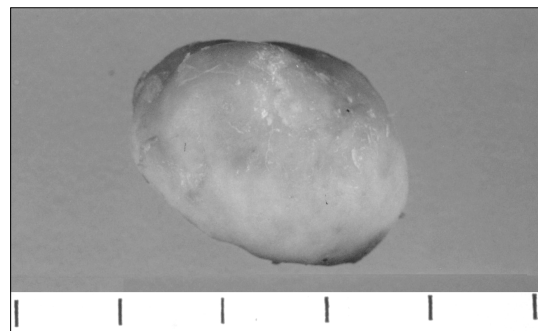


Fig. 3. Gross finding. Through the window, a 3x2.5x2 cm sized, gray, yellowish osteoma.

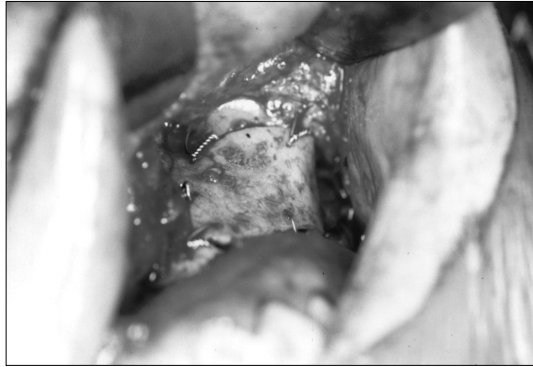


Fig. 4. Intraoperative finding (). The window was closed using the wirings which were marked before incising the bony wall.



Fig. 5. Postoperative CT scan. The axial CT scan shows the result of the patient 2 years after the operation.

(Fig. 5).

고 찰

Caldwell - Luc

3)

4)

: 1

, , , 5)

6)

3)

가

3)

3)

7)

5)

Caldwell - Luc

가

가

C - L

가

3 × 2.5 × 2 cm

2 mm

3) 1 mm

(trabecular structure)

(spongiosa)

9)

가

3)

3)

가

가

가

trocar

가

10

10)

가 .¹⁰⁾
 가
 C - L
 가
 .
결 론
 .
 C - L
 .
 가
 C - L

중심 단어 : Caldwell - Luc

REFERENCES

- 1) MacBeth R. *Caldwell-Luc operation 1952-1966. Arch Otolaryngol* 1968;87:630-6.
- 2) Park SY. *Prevention of Postoperative Complication in Caldwell-Luc Operation. Korean J Otolaryngol* 1993;36:960-5.
- 3) Helmut HL. *Osteoplastic surgery of the sinus maxillaris-the "bone lid" method. J Max-fac Surg* 1984;12:271-6.
- 4) Grossehelleforth A, Duker J. *Sensibilitätsstörungen nach Kieferhöhlenoperationen. Fortschr Kiefer Gesichtschir* 1976;21:82-3.
- 5) Choung PH, Choung YH. *Vascularized bone flap for access to the maxillary sinus. J Oral Maxillofac Surg* 1997;55:832-5.
- 6) Noyek AM, Zinzmor J. *Radiology of the maxillary sinus after Caldwell-Luc surgery. Otolaryngol Clin North Am* 1976;9:83-91.
- 7) Lindorf HH. *Knochendeckelverschluss nach oraler Kieferhöhlenöffnung. Dtsch Zahnarztl Z* 1974;29:587.
- 8) Schenk RK. *Histologie der primären Knochenheilung. Fortschr. Kiefer-u. Gesichtschir* 1875;19:8.
- 9) Schamm W. *Klinische und tierexperimentelle Untersuchungen über die Transplantation autoplastischer Spongiosa. Hefte z.Unfallheilk, S. 104. Springer, Berlin-Heidelberg-New York* 1970.
- 10) Goran W, Sven E, Helene B, Ulla G, Kenneth H. *The use of bone lid to close the anterior wall defect after surgery in the maxillary sinus. Swed Dent J* 1992;16:173-82.