

## 경구개에 발생한 신경초종 1례

엄재욱<sup>1</sup> · 황부현<sup>1</sup> · 김태섭<sup>2</sup>

## A Case of Schwannoma of the Hard Palate

Jae Wook Eom, MD<sup>1</sup>, Bu Hyun Hwang, MD<sup>1</sup> and Tae Seop Kim, MD<sup>2</sup><sup>1</sup>Department of Otolaryngology-Head and Neck Surgery, College of Medicine, Inje University, Pusan Paik Hospital, Pusan, <sup>2</sup>Kim Tae Seop ENT Clinic, Pusan, Korea

## - ABSTRACT -

Schwannomas are benign neoplasm which arise from the Schwann cells of the nerve sheath. They often originate from the eighth cranial nerve and about 25% of all schwannomas are located in the head and neck. The lateral cervical region and mouth are the most common sites of schwannomas. Schwannomas arising from the hard palate are very rare, and only a few cases have been reported. We report a case of schwannoma which originated from the hard palate. (*J Clinical Otolaryngol* 2001;12:122-124)

**KEY WORDS** : Schwannoma · Hard palate.

## 서론

25%

Kim<sup>1)</sup> 1

1

2×3 cm

(Fig. 1).

## 증례

15

2

Verocay body가

(Fig. 2).

: 2001 5 12

: 2001 6 1

: , 614 - 735

633 -

165

: (051) 890 - 6379 ·

: (051) 892 - 3831

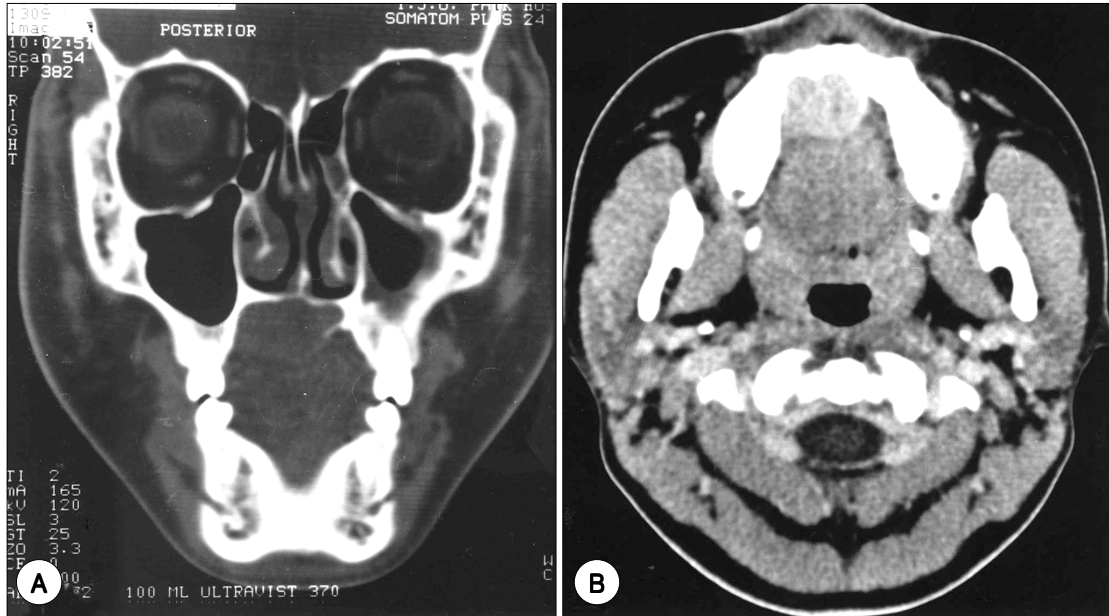
E - mail : bhwang@inje.md

## 고찰

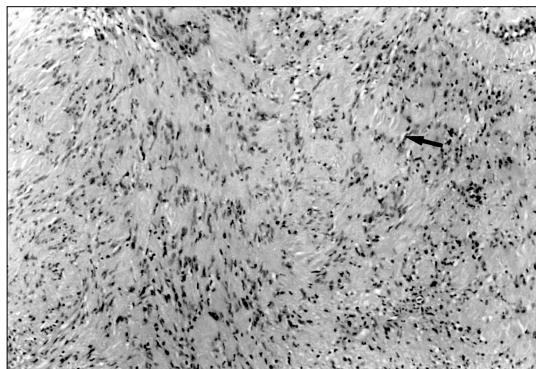
1910

Verocay가

neurinoma



**Fig. 1.** Preoperative coronal (A) and axial (B) CT images. A well circumscribed and enhanced mass erodes the hard palate.



**Fig. 2.** Microscopic finding (H-E,  $\times 100$ ). Plexiform patterned mass is noted, which consisted of compactly arranged spindle cells revealing typical nuclear palisading and Verocay bodies (arrow).

가 neurinoma, 가  
 periphera1 glioma, perineural fibriblastoma  
 neurilemmoma, schwannoma  
 가 1)2) 가

25% 45%가

2)3)  
 가  
 3)4)  
 Kim 1) 1  
 20~40  
 가  
 3)4)  
 가  
 3)  
 가가

가  
 가  
 T1 T2  
 T1  
 가  
 가  
 가  
 Antoni B A B Antoni A  
 가  
 가  
 가 8~12%  
 가

3)  
 가 8)  
 가 9)  
 중심 단어 :

**REFERENCES**

- 1) Kim JK, Kwon OS, Park SM. *A case of neurilemmoma of the hard palate. Korean J Otolaryngol 1984;27:419-22.*
- 2) Seo YI, Nam SY, An KH, Km SY, Lee KS. *External nerve sheath tumors of the head and neck. Korean J Otolaryngol 1997;40:908-13.*
- 3) Kim MS, Kim YH, Jung HJ, Hong WP. *A case of neurilemmoma of the posterior wall of the hypopharynx. Korean J Otolaryngol 1998;41:274-7.*
- 4) Lim YM, Won SY, Rha KS, Yoo JY, Park CI. *A clinical analysis of neurilemmoma originated from the head and neck. Korean J Otolaryngol 1991;34:769-74.*
- 5) Jung SR, Rho HJ, Lee HJ, Jung SE, Byun JY, Yang IK, et al. *CT and MR features of the intracranial Schwannomas Korean J Otolaryngol 1996;34:443-9.*
- 6) Lee GD, Hwanf SK, Goh HJ, Wang SG, Chon KM. *Three cases of neurilemmoma originated from head and neck. Korean J Otolaryngol 1987;30:781-8.*
- 7) Ishikawa K, Hannzawa S, Togawa K. *Neurogenic neoplasia in the head and neck region. Auris Nasus Laryngol 1988; 15:199-210.*
- 8) Toriumi KM, Atiyah RA, Murad T. *Extracranial neurogenic tumors of the head and neck. Otolaryngol Clin Nor Am 1986;19:609-17.*
- 9) Kragh LV, Soule EH, Masson JK. *Benign and malignant neurilemmomas of the head and neck. Surg Gyn Obst 1960; 111:211-8.*