

## 부갑상선 선종 1예

김춘동 · 김지연 · 신혜정 · 신유리

## A Case of Parathyroid Adenoma

Chun Dong Kim, MD, Jee Yun Kim, MD, Hye Jung Shin, MD and You Ree Shin, MD

Department of Otolaryngology-Head and Neck Surgery, College of Medicine, Ewha Womans University, Seoul, Korea

## - ABSTRACT -

Primary hyperparathyroidism was once thought to be a rare disorder, but it is now documented to be the most common cause of hypercalcemia in non-hospitalized patients. It occurs in about one in every 500 women over 40 years of age one in every 2000 men. The success of parathyroid surgery is based on accurate localization of normal and abnormal parathyroid glands, knowledge of the pathologic conditions, and meticulous dissection during removal of the abnormal glands. although parathyroid localization is essential in cases requiring re-exploration, there is considerable controversy regarding the indications for localization studies prior to primary exploration, since the success rate for surgery exceeds 90% to 95%. We experienced a case of parathyroid adenoma which was diagnosed with biopsy and radiographic examination. In this paper, we report this case with review of literature. (J Clinical Otolaryngol 2000;11:323-325)

**KEY WORDS** : Parathyroid adenoma · Primary hyperparathyroidism.

## 서 론

가 1)  
80%  
43 3  
90%  
가 , 3  
2

: 2000 9 10

: 2000 10 20

: , 158 - 710 911 - 1

. 3

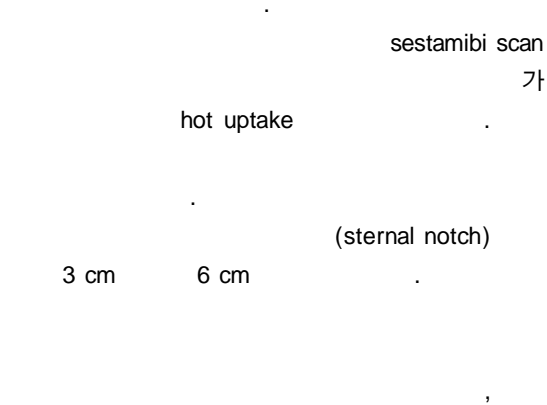
: (02) 650 - 5016 . : (02) 2648 - 5604

E - mail : cdkim007@chollian.net

tal calcium 11.6 mg/dl( 8.2 10.5 mg/dl)

to -

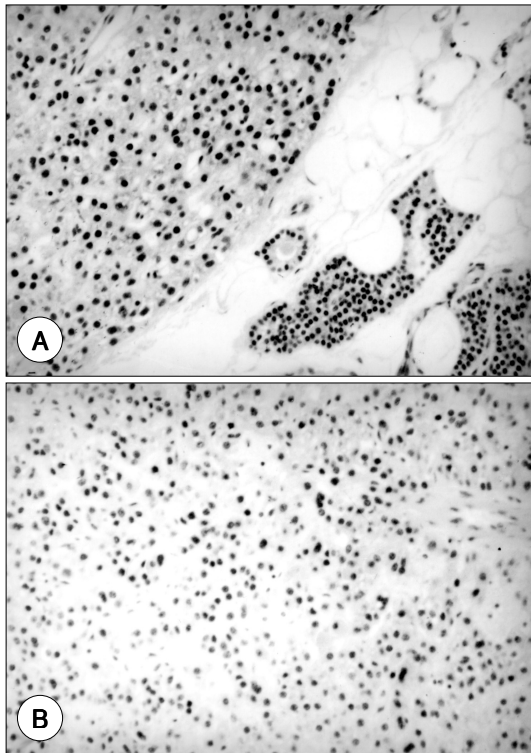
ionized calcium 5.6 mg/dl( 4.6 5.4 mg/dl)



(Fig. 1).

ionized calcium 5.2 mg/dl  
ionized calcium 4.8 mg/dl total calcium 8.4 mg/dl  
7 , 1  
ionized calcium 5.2 mg/dl

고 찰



**Fig. 1.** Microscopic finding of parathyroid adenoma (H & E × 100) : A : There is a nodular mass with a distinct capsule and a rim of normal parathyroid gland adjacent to it. The adenoma is composed predominantly of chief cells with a nucleus, which is slightly larger than that of normal cells. B : The cells are arranged in cords, sheets, nests, or rarely glandular pattern.

가 .<sup>1)</sup>  
40 500 1  
, 2000 1 .<sup>2)</sup>  
가 .  
, , , ,<sup>3)4)</sup>  
,  
가  
가  
5×3×2 mm 65 mg  
. 84%  
4  
가 . 50%  
,  
<sup>3-5)</sup>  
가  
가  
가

가 . . . . . 1

가 . . . . . 8)

sestamibi scan . . . . . 가

가 . . . . . sestamibi . . . . . 1 . . . . . 가

가 2 가 . . . . . 3-5) . . . . . 11.6

가 80%가 mg/dl . . . . . 8.4mg/dl

30

6)7) . . . . . 4

가 . . . . . 4

가 . . . . . 5)

가 . . . . . 3½ 가

3-5) . . . . . sestamibi scan . . . . . 가

가 . . . . . hot uptake . . . . . 가

가 가 . . . . . 가

(rim) . . . . .

중심 단어 :

**REFERENCES**

- 1) Orlo H Clark, Quan-yang Duh. *Primary hyperparathyroidism, surgical perspective. Surg Clin North Am* 1989;18: 701-14.
- 2) Boonsira CE, Jackson JE. *Serum calcium survey for hyperparathyroidism: Results in 50,000 Clinic Patients. Am J Clin Pathol* 1971;55:523-6.
- 3) Summers GH. *Surgical management of parathyroid disorders In: Cummings CW, Fredrickson JM, Harker LA, Krause CJ, Schuller DE, editors. OtoraryngologyHead and Neck Surgery. 3rd ed. St. Louis: Mosby Year Book;1998. p.2519-29.*
- 4) Petti GH, Jr. *Parathyroid disease and surgery In: Bailey BJ, editor. Head and Neck Surgery-Otolaryngology. 2nd ed, Philadelphia: Lippincott-Raven Publishers;1998. p. 1627-36.*
- 5) Petti GH, Jr. *Hyperparathyroidism. Otolaryngol Clin North Am* 1990;23:339-55.
- 6) Shahala AR, LaRosa CA, Jaff BM. *Parathyroid localization prior to primary exploration. Am J Surg* 1993;166: 289-93.
- 7) Shahala AR, Sarkar S, Strashun A, Samuel Y. *Sestamibi scan for preoperative localization in primary hyperparathyroidism. Head & Neck* 1997;19:87-91.
- 8) Shorland WH. *Surgery for parathyroid adenoma and hyperplasia: Relationship of histology to outcome. Head & Neck* 1993;15:24-8.